



Governor Speed Adjusting Stepper Motor



Summary

Woodward Speed Setting Stepper Motor gives accurate speed set for mechanical hydraulic governor. The motor is highly vibration resistant and combined with a separate motor driver that is specifically designed to achieve high controllability.

— Widely adjustable speed range
The speed is adjustable between 0.5 and 8 rpm.
Two selectable speed-setting rates, RATE 1 and RATE 2 are available.

Feature

— High reliability
The stepper motor has no brush in it. This gives high reliability and maintenance free feature

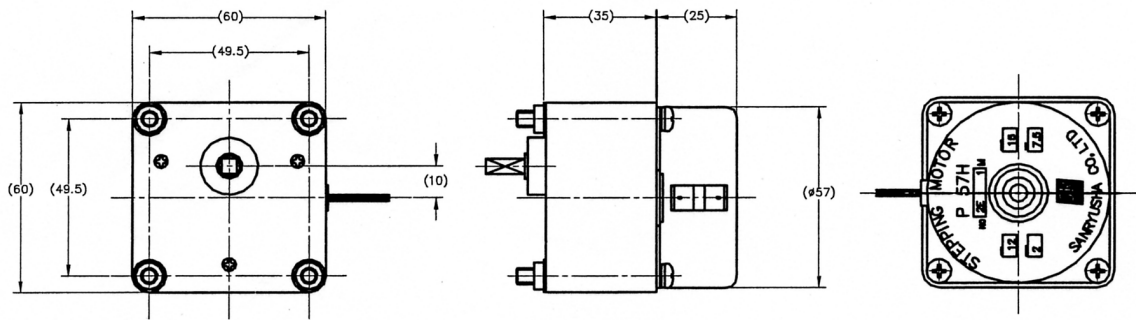
— Vibration resistant
Passed MIL-STD-810C, Curve H test.

— Accurate speed set
The stepper motor gives accurate speed set regardless the motor load.

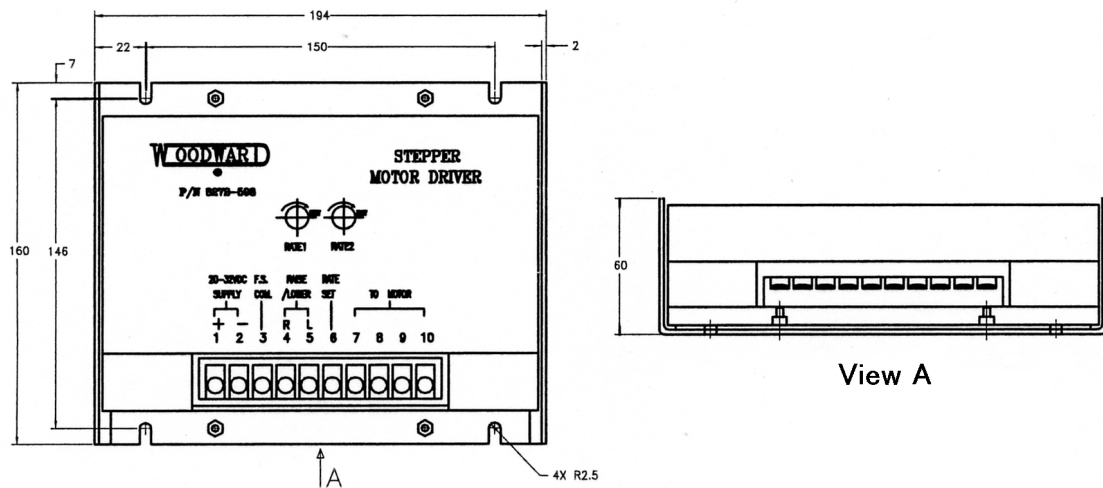
Specification

Speed range	: 0.5-8 rpm
Driver Supply Voltage	: 20-32 Vdc
Power Consumption	: 32 W maximum
Environment:	: Operating Temperature 0 - 60 °C Maximum Humidity 95 % (Non condensing)
Vibration	: Tested per MIL-STD-810C, Curve H

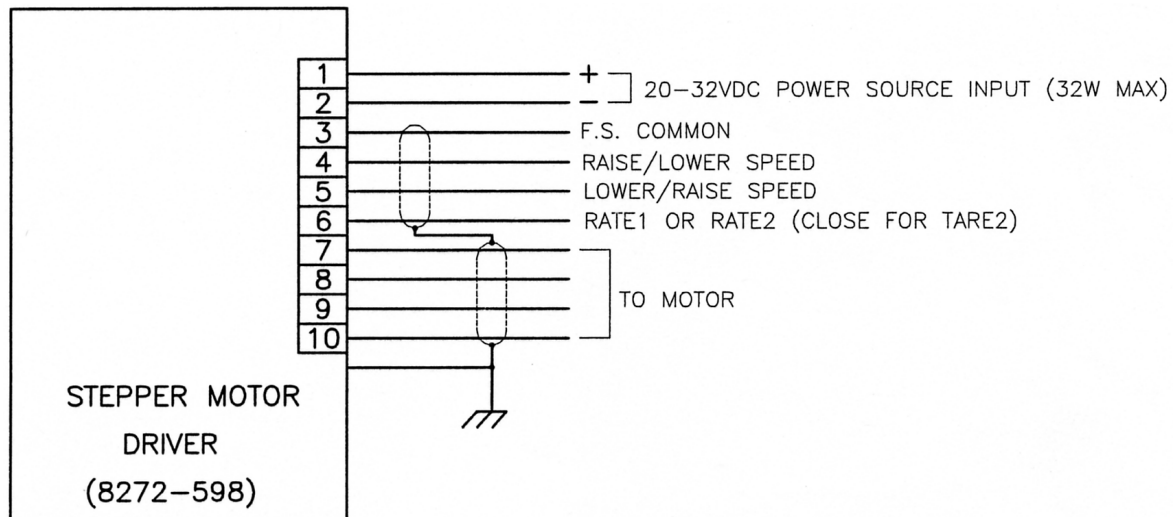
Woodward Governor Company reserves the right to update any portion of this publication at any time. Information provided by Woodward Governor Company is believed to be correct and reliable. However, no responsibility is assumed by Woodward Governor Company unless otherwise expressly undertaken.



[Motor Outline Drawing]



[Driver Outline Drawing]



[Wiring Diagram]

NOTE

- See the wiring drawing specified by the governor when installing the system.
- The stepper motor driver must be installed on metal surface to have good heat dispersion.

Woodward Governor (Japan), LTD
 251-1 Nakazawa Tomisato-city
 Chiba, 286-0291 Japan
 PHONE: 81(476) 93-4662 FAX: 81(476) 93-7939

Printed in Japan 2003/03