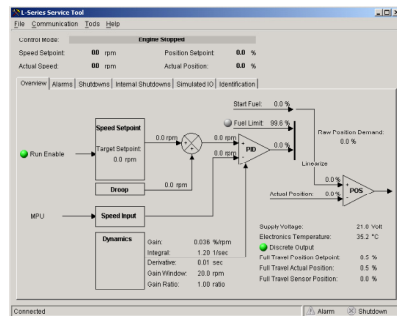


## CLASS #106 – L-Series Controls



### Description

This class will give the student the opportunity to learn more about servicing and commissioning the L-Series control, a low cost and fully integrated speed control and actuator. During this course, the student will learn about the theory, installation, programming, operation, and maintenance of the L-Series control with the help of simulators and PowerPoint presentations. The hands-on part of the course will include programming, adjustments, and troubleshooting techniques on the control system.

### Class Objectives

Upon successful completion of this course the student will be able to:

- Demonstrate an understanding of speed control theory pertaining to the L-Series control system.
- Calibrate, program, and set-up the unit for applications such as Stanadyne® and Delphi® pump arrangements.
- Configure inputs for sensor or auxiliary functionality and control purposes.
- Configure outputs for meter drivers or alarm indication.
- Understand control modes such as dual dynamics, fuel limiting or gain mapping, and when each mode is in effect.

### Course Duration

The course runs for two days and is conducted at our premises in Kingsgrove, NSW. We can offer this course as part of an on-site training program (details available on request). Class size is limited to a maximum of eight students.

### Attainment

A "Certificate of Attainment" is awarded to students who successfully pass a written examination.

***The instructor reserves the right to modify the class content to best suit the needs of the class.***